

# \$639,000 - 5913 Panorama Drive, Blackfalds

MLS® #A2196803

**\$639,000**

3 Bedroom, 3.00 Bathroom, 1,740 sqft  
Residential on 0.07 Acres

Panorama Estates, Blackfalds, Alberta

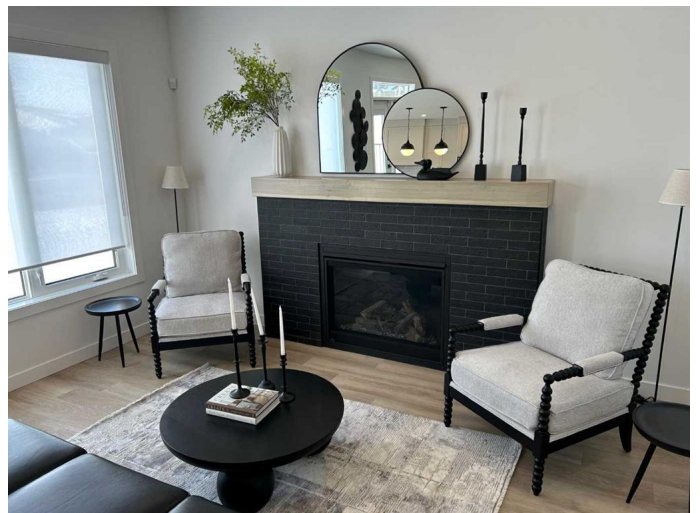
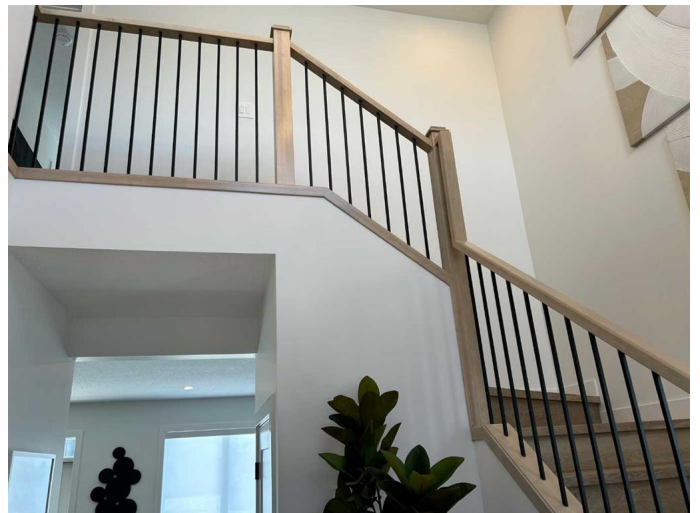
Welcome to this stunning 2 Storey home by Abbey Platinum Master Built. This 1740 sq. ft. home has an amazing curb appeal. A spacious entrance greets you as you enter this 3 bedroom 2.5 bath home. An open floor plan features a large bright kitchen with a huge island & walk through pantry. Amazing back splash in "Artisan" 2 x 8 glossy white in brick jointed layout. Upgraded kitchen sink in black.

A west facing 10' x 12' deck is just off the kitchen. Cozy great room is open to the kitchen & has an upgraded Napoleon "Ascent 42" fireplace with black brick surround. As you walk up the stairs you will find a huge primary bedroom with an incredible 5 piece ensuite (double sinks, soaker tub, separate shower & toilet). The walk-in closet completes this beautiful room.. Bedroom 2 also has a walk in closet. Bedroom 3 is also good sized. An upstairs laundry makes for added convenience. 9' basement ceiling and has oversized 60' x 36' basement window. Great potential down! High efficient furnace with heat recovery & ventilator. Cambridge 30 year shingles. The list of features can go on and on in this beautiful executive home. An absolute must see!

Built in 2024

## Essential Information

|        |           |
|--------|-----------|
| MLS® # | A2196803  |
| Price  | \$639,000 |



|                |             |
|----------------|-------------|
| Bedrooms       | 3           |
| Bathrooms      | 3.00        |
| Full Baths     | 2           |
| Half Baths     | 1           |
| Square Footage | 1,740       |
| Acres          | 0.07        |
| Year Built     | 2024        |
| Type           | Residential |
| Sub-Type       | Detached    |
| Style          | 2 Storey    |
| Status         | Active      |

### Community Information

|             |                     |
|-------------|---------------------|
| Address     | 5913 Panorama Drive |
| Subdivision | Panorama Estates    |
| City        | Blackfalds          |
| County      | Lacombe County      |
| Province    | Alberta             |
| Postal Code | T4M 0N9             |

### Amenities

|                |                        |
|----------------|------------------------|
| Parking Spaces | 2                      |
| Parking        | Single Garage Detached |
| # of Garages   | 2                      |

### Interior

|                   |                                                                                      |
|-------------------|--------------------------------------------------------------------------------------|
| Interior Features | High Ceilings, Kitchen Island, Pantry, Soaking Tub, Vinyl Windows, Walk-In Closet(s) |
| Appliances        | Dishwasher, Refrigerator, Stove(s), Washer/Dryer                                     |
| Heating           | High Efficiency, Forced Air, Natural Gas                                             |
| Cooling           | None                                                                                 |
| Fireplace         | Yes                                                                                  |
| # of Fireplaces   | 1                                                                                    |
| Fireplaces        | Brick Facing, Gas, Great Room, See Remarks                                           |
| Has Basement      | Yes                                                                                  |
| Basement          | Full, Unfinished                                                                     |

### Exterior

|                   |       |
|-------------------|-------|
| Exterior Features | Other |
|-------------------|-------|

|                 |                 |
|-----------------|-----------------|
| Lot Description | City Lot        |
| Roof            | Asphalt Shingle |
| Construction    | Vinyl Siding    |
| Foundation      | Poured Concrete |

### **Additional Information**

|                |                     |
|----------------|---------------------|
| Date Listed    | February 24th, 2025 |
| Days on Market | 56                  |
| Zoning         | R1M                 |

### **Listing Details**

|                |                                   |
|----------------|-----------------------------------|
| Listing Office | Royal LePage Network Realty Corp. |
|----------------|-----------------------------------|

Data is supplied by Pillar 9â„¢ MLSÂ® System. Pillar 9â„¢ is the owner of the copyright in its MLSÂ® System. Data is deemed reliable but is not guaranteed accurate by Pillar 9â„¢. The trademarks MLSÂ®, Multiple Listing ServiceÂ® and the associated logos are owned by The Canadian Real Estate Association (CREA) and identify the quality of services provided by real estate professionals who are members of CREA. Used under license.