

\$614,900 - 45 Emmett Crescent, Red Deer

MLS® #A2216736

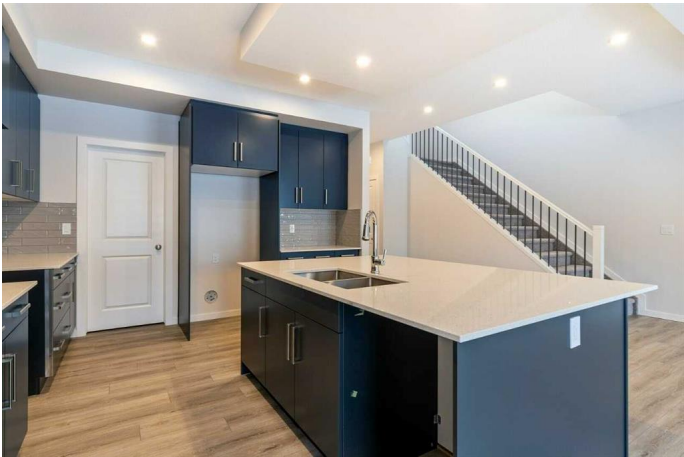
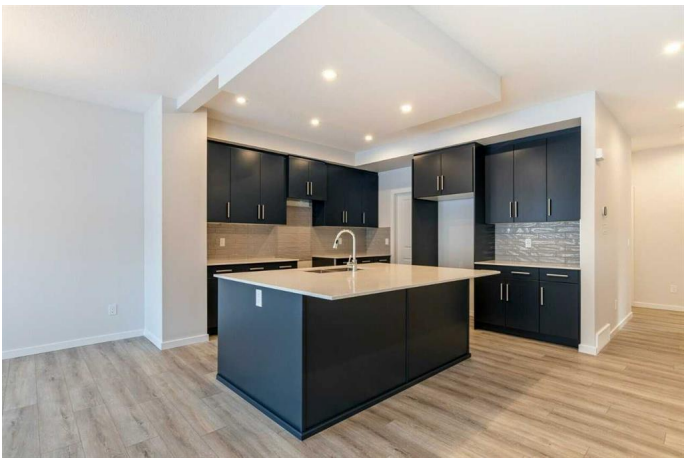
\$614,900

3 Bedroom, 3.00 Bathroom, 2,340 sqft
Residential on 0.11 Acres

Evergreen, Red Deer, Alberta

Welcome to the Elena B by Bedrock Homes—a stunning 3-bedroom, 2.5-bathroom two-story detached home with a double attached garage, ideally located in the vibrant new Evergreen community in northeast Red Deer. This thoughtfully designed home features a separate side entrance for direct basement access and a 9â€™™ foundation, offering future development potential. Enjoy an open-concept layout with a central kitchen highlighted by a large Quartz island, Samsung appliances, and a stylish LED electric fireplace. Elegant metal spindle railings adorn both levels, while Luxury Vinyl Plank flooring flows throughout the main floor and all wet areas. The mudroom is both functional and charming with a built-in bench, shelves, and hooks. Backing onto a lane, this home offers added privacy and convenience. Surrounded by scenic greenspaces, walking trails, and a new playground, Evergreen provides easy access to schools, shops, restaurants, and outdoor attractions.

Built in 2025



Essential Information

MLS® #	A2216736
Price	\$614,900
Bedrooms	3
Bathrooms	3.00
Full Baths	2

Half Baths	1
Square Footage	2,340
Acres	0.11
Year Built	2025
Type	Residential
Sub-Type	Detached
Style	2 Storey
Status	Active

Community Information

Address	45 Emmett Crescent
Subdivision	Evergreen
City	Red Deer
County	Red Deer
Province	Alberta
Postal Code	T4P3G8

Amenities

Amenities	None
Parking Spaces	4
Parking	Double Garage Attached
# of Garages	2

Interior

Interior Features	Double Vanity, Kitchen Island, No Animal Home, No Smoking Home, Open Floorplan, Pantry, Separate Entrance, Walk-In Closet(s), Stone Counters
Appliances	Range Hood
Heating	Forced Air, Natural Gas
Cooling	None
Fireplace	Yes
# of Fireplaces	1
Fireplaces	Decorative, Electric
Has Basement	Yes
Basement	Full, Unfinished

Exterior

Exterior Features	None
Lot Description	Back Yard, Back Lane

Roof	Asphalt Shingle
Construction	Vinyl Siding, Wood Frame, Cement Fiber Board
Foundation	Poured Concrete

Additional Information

Date Listed	May 2nd, 2025
Days on Market	72
Zoning	R1G
HOA Fees Freq.	ANN

Listing Details

Listing Office	Bode Platform Inc.
----------------	--------------------

Data is supplied by Pillar 9â„¢ MLS® System. Pillar 9â„¢ is the owner of the copyright in its MLS® System. Data is deemed reliable but is not guaranteed accurate by Pillar 9â„¢. The trademarks MLS®, Multiple Listing Service® and the associated logos are owned by The Canadian Real Estate Association (CREA) and identify the quality of services provided by real estate professionals who are members of CREA. Used under license.