

\$575,000 - 7 Reighley Close, Red Deer

MLS® #A2237970

\$575,000

4 Bedroom, 3.00 Bathroom, 1,111 sqft

Residential on 0.15 Acres

Rosedale Meadows, Red Deer, Alberta

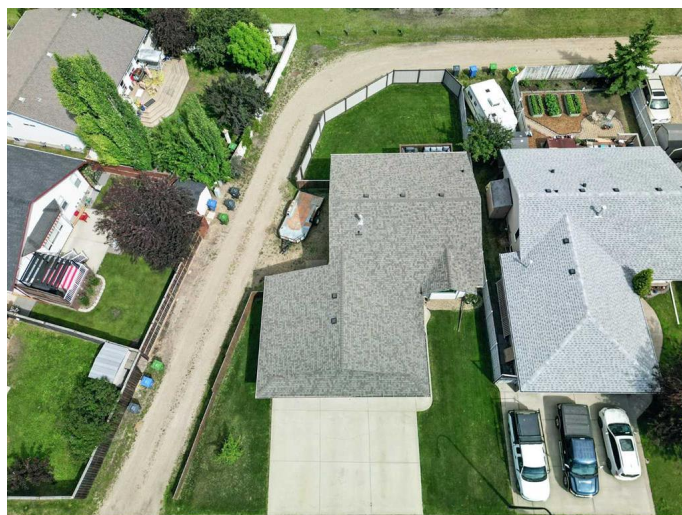
Looking for extra garage space? This TRIPLE CAR ATTACHED GARAGE is for YOU! This well-maintained bilevel in the desirable subdivision of Rosedale Meadows has all the parking you need, and then some! Not only do you have a triple garage, and an extra wide driveway, there is also an RV parking pad on the side of the home, with a sliding gate in case you need extra space! When you walk inside you will be pleased with the vaulted ceilings and lots of natural light. The open floorplan flows with a good sized living room and dining room, and into the beautiful kitchen with newer stainless steel appliances and tons of counter space! A door off the kitchen leads out to the back deck and gorgeous yard where you'll spend tons of family time! Back inside, you'll find a 4 piece bathroom and bedroom, along with the King-sized Primary complete with large closets and a 3 piece ensuite! Downstairs, prepare to be impressed with a massive family room! There is a great laundry room and utility room tucked away, another 3 piece bathroom, and 2 more bedrooms! The carpets were just professionally re-stretched and cleaned as well. Make this house your new home, bring all your vehicles, RV and ATV's, and enjoy the 6400+ sq ft lot!

Built in 2003

Essential Information

MLS® #

A2237970



Price	\$575,000
Bedrooms	4
Bathrooms	3.00
Full Baths	3
Square Footage	1,111
Acres	0.15
Year Built	2003
Type	Residential
Sub-Type	Detached
Style	Bi-Level
Status	Active

Community Information

Address	7 Reighley Close
Subdivision	Rosedale Meadows
City	Red Deer
County	Red Deer
Province	Alberta
Postal Code	T4P 3V7

Amenities

Parking Spaces	6
Parking	Driveway, RV Access/Parking, Triple Garage Attached, Additional Parking, On Street
# of Garages	3

Interior

Interior Features	Ceiling Fan(s), High Ceilings, Open Floorplan
Appliances	Dishwasher, Microwave, Refrigerator, Stove(s), Washer/Dryer, Window Coverings, Oven
Heating	Forced Air, Natural Gas
Cooling	None
Fireplace	Yes
# of Fireplaces	1
Fireplaces	Gas
Has Basement	Yes
Basement	Finished, Full

Exterior

Exterior Features	Other, Private Yard, Storage
Lot Description	Back Lane, Back Yard
Roof	Asphalt Shingle
Construction	Vinyl Siding, Wood Frame
Foundation	Poured Concrete

Additional Information

Date Listed	July 11th, 2025
Days on Market	20
Zoning	R-L

Listing Details

Listing Office	Century 21 Maximum
----------------	--------------------

Data is supplied by Pillar 9â„¢ MLS® System. Pillar 9â„¢ is the owner of the copyright in its MLS® System. Data is deemed reliable but is not guaranteed accurate by Pillar 9â„¢. The trademarks MLS®, Multiple Listing Service® and the associated logos are owned by The Canadian Real Estate Association (CREA) and identify the quality of services provided by real estate professionals who are members of CREA. Used under license.