

\$96,000 - 39 Bruhn Bend, Rural Ponoka County

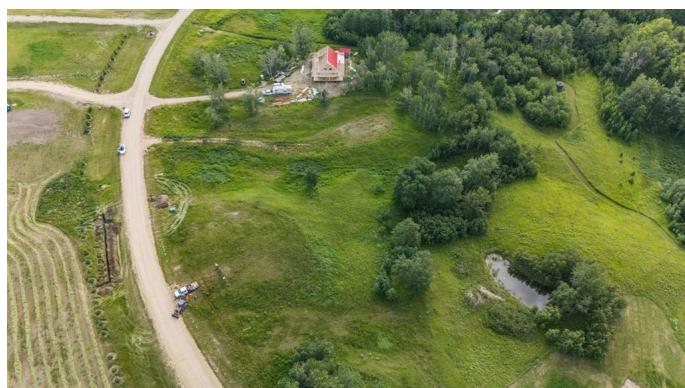
MLS® #A2238846

\$96,000

0 Bedroom, 0.00 Bathroom,
Land on 1.64 Acres

NONE, Rural Ponoka County, Alberta

Looking for a beautiful acreage lot with lots of privacy to build your dream home? This incredible rare and private 1.64 acre lot backing onto a reserve provides the perfect opportunity – nestled in Westview Estates near the shores of Parkland Beach at Gull Lake. Where you can enjoy all your favourite summer activities from swimming, fishing, boating . . . or play a round of golf right across the road at the Gull Lake Golf Course . . . or cross country skiing in the winter. So much on offer here! Close to several communities . . . Rimbey, Bentley, Lacombe . . . Red Deer where you will find lots of shopping and entertainment. There is fence on three sides and a gate to the nature reserve with peace of mind that no one will develop behind you. This beautiful spot needs to be checked out!



Essential Information

MLS® #	A2238846
Price	\$96,000
Bathrooms	0.00
Acres	1.64
Type	Land
Sub-Type	Residential Land
Status	Active

Community Information

Address 39 Bruhn Bend

Subdivision	NONE
City	Rural Ponoka County
County	Ponoka County
Province	Alberta
Postal Code	T0C 2J0

Exterior

Lot Description	Backs on to Park/Green Space
-----------------	------------------------------

Additional Information

Date Listed	July 10th, 2025
Days on Market	44
Zoning	6

Listing Details

Listing Office	RE/MAX real estate central alberta
----------------	------------------------------------

Data is supplied by Pillar 9â„¢ MLSÂ® System. Pillar 9â„¢ is the owner of the copyright in its MLSÂ® System. Data is deemed reliable but is not guaranteed accurate by Pillar 9â„¢. The trademarks MLSÂ®, Multiple Listing ServiceÂ® and the associated logos are owned by The Canadian Real Estate Association (CREA) and identify the quality of services provided by real estate professionals who are members of CREA. Used under license.